



QUALITY MATE



tests
management

QUALITYMATE FOR TESTS MANAGEMENT

QualityMate suite of tools enables organizations to industrialize the software development process providing support for different process activities like Requirements Management, Tests Management and Issues Management.

QualityMate solution does not imply you to work in a pre-determined way or apply a specific methodology. QualityMate easily adapts to the way your organization works. Whether your process is highly structured or very agile, QualityMate can be customized to support the way your teams work. You can create an infinite number of entity types and for each one, infinite number of entity attributes. Each entity attribute can be configured to support your own information needs. The workflow process can be completely configured by setting security options and creating constraints, actions and transitions rules for each atomic attribute. By doing this you can be sure your process will be institutionalized.

All the information is stored in the central repository in a hierarchical way and flows naturally between all the different modules, being constantly refreshed without the need of any integration or other process of import/export.

TESTING PROCESS

Testing is the last phase a system must go through before going live. However, due to time-to-market pressure, by the time tests should start, it's almost too late to have complete or understandable requirements, a testing environment in place or a sound test plan. This often raises several difficulties that lead to low software quality, over budget activities and dramatic delays.

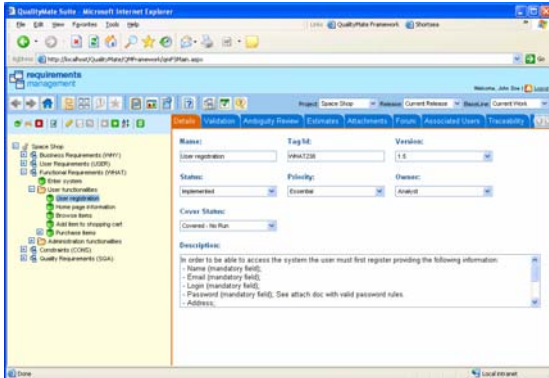
Having the testing team working alongside the development team leads to the definition of better requirements, a clear vision on resources and more realistic testing plans.

Tests management process can be divided in two different main activities. Test plan design according to your requirements and test execution. These two activities must be managed in order to take go-live decisions with confidence.



1. Specify requirements

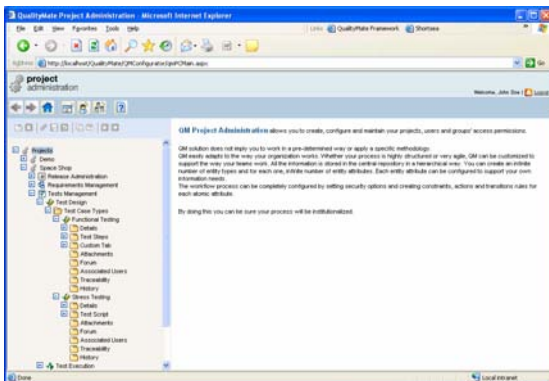
Requirements based testing. Create your own test cases based on your requirements. Start to define your own requirements and link your test cases design to your requirements.



Define your requirements

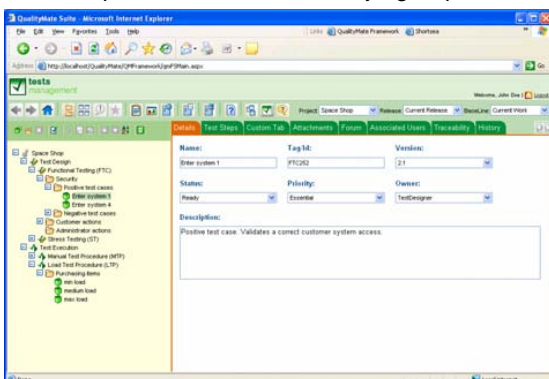
2. Plan tests

Start to organize all the information by creating different test cases types.



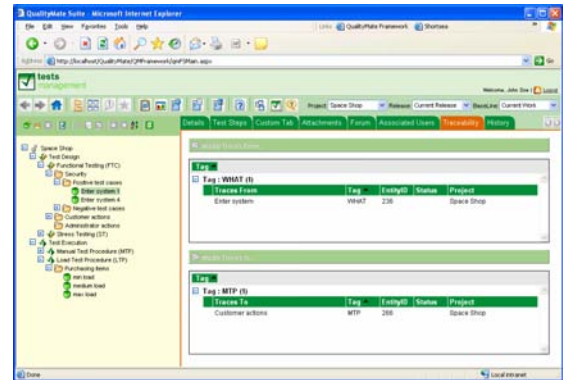
Start to define your own test case types

Create a test plan based on the identifying requirements.



QualityMate for Tests Management – Test plan design

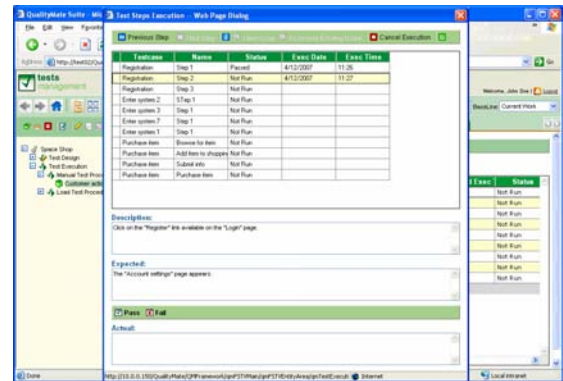
Trace your test cases from your requirements.



QualityMate for Tests Management – Traceability tab

3. Execute tests

Create test procedures (of any type) and perform test procedure executions. Test procedures can be of any type (load or non-load).

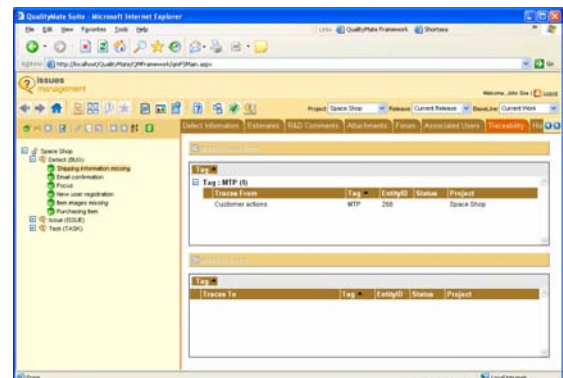


4. Analyzing test procedure execution results

Analyze test procedure results by using available graphs and reports.

5. Track defects

Report issues detected in your application and track how repairs are progressing.



Trace detected issues from test procedure executions

QUALITYMATE FOR TESTS MANAGEMENT BENEFITS

Application testing is a complex process involving the development and execution of thousands of test cases. Often, tests are required for multiple hardware platforms, multiple configurations (computers, operating systems, and browsers) and multiple application versions. Managing all aspects of the testing process can be time-consuming and difficult. QualityMate for Tests Management is the right tool to support and facilitate your testing process by providing the following benefits:

Completely adaptable

QualityMate for Tests Management does not force you to work in a pre-determined way or use a specific methodology. QualityMate easily adapts to the way your organization works. Whether your process is highly structured or very agile, QualityMate for Tests Management can be customized to support the way your teams work. The workflow process can be completely configured by setting security options and creating constraints, actions and transitions rules for each atomic attribute. By doing this you can assure your Tests Management process will be institutionalized.

Database centric

QualityMate for Tests Management guarantees that the most current data is available to the people who need it, whenever they need it. Each test case can always be associated with any requirement type, test procedure execution or even with an issue allowing you to draw conclusions about your project.

Access information from anywhere

QualityMate for Tests Management is a complete web-based four tier solution. The client layer is supported by a web browser, the presentation layer is developed using .Net technology, the business layer was developed using Java technology and the data layer which can be stored in Microsoft Access or Microsoft SQLServer databases. This technology allows you to access the information from anywhere without installing any extra software on your desktop.

Easy-to-use interface

Intuitive user interface allows you to guarantee a short learning curve for all stakeholders.

Automatic notifications

Users can receive automatic notifications every time a defined condition is met.

Improve collaboration

Forum discussion allows stakeholders to provide important input regarding Tests Management information.

Audit trail and change history

Every change is automatically audited. Each change creates a unique history record, highlighting the differences between one version of an test and another, including the reason for the change.

Parallel development

Different project releases allow different teams working on the same project but in different releases of the product. Baselines can be created for each project release. By comparing baselines and respective releases you can see where volatility, modifications, additions, and deletions have taken place.

Development Tools



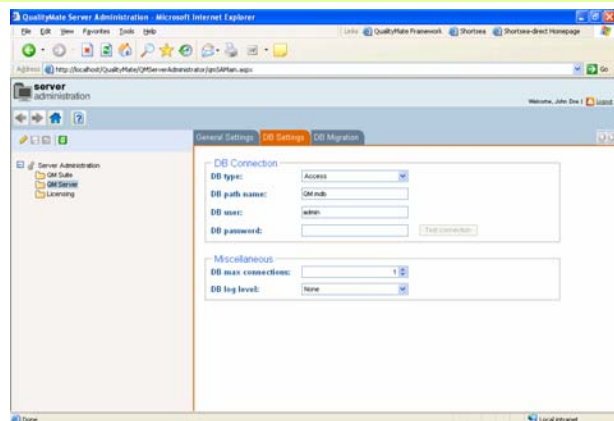
Administration Tools



QUALITYMATE FOR TESTS MANAGEMENT COMPONENTS

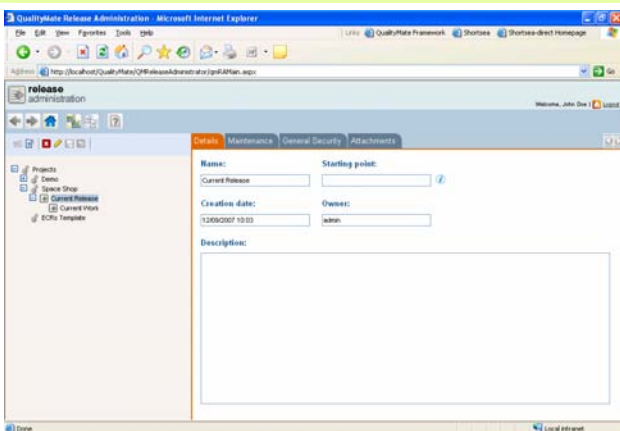
QualityMate for Tests Management includes the following components:

QualityMate Server administration



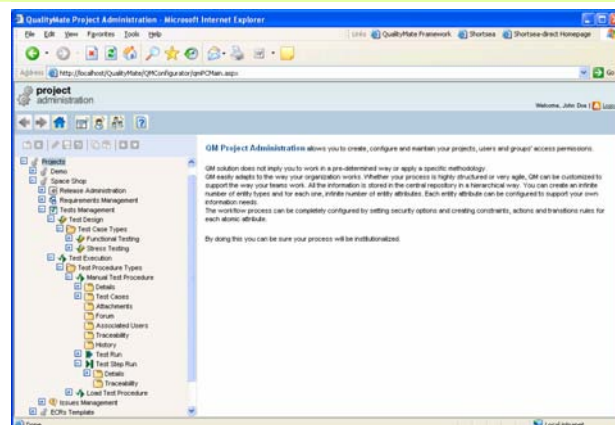
This utility enables QualityMate administrator to set up all QualityMate Server options such as database connectivity, and licence management.

QualityMate Release administration



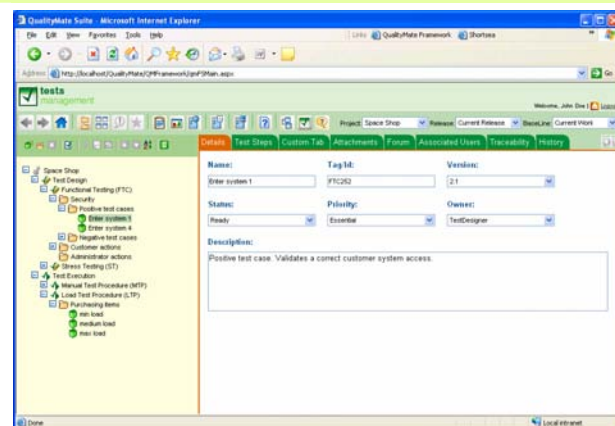
This utility enables QualityMate administration to manage project releases and baselines.

QualityMate Project administration



This utility enables QualityMate Administrator to manage project specific tasks such as project configuration and user management.

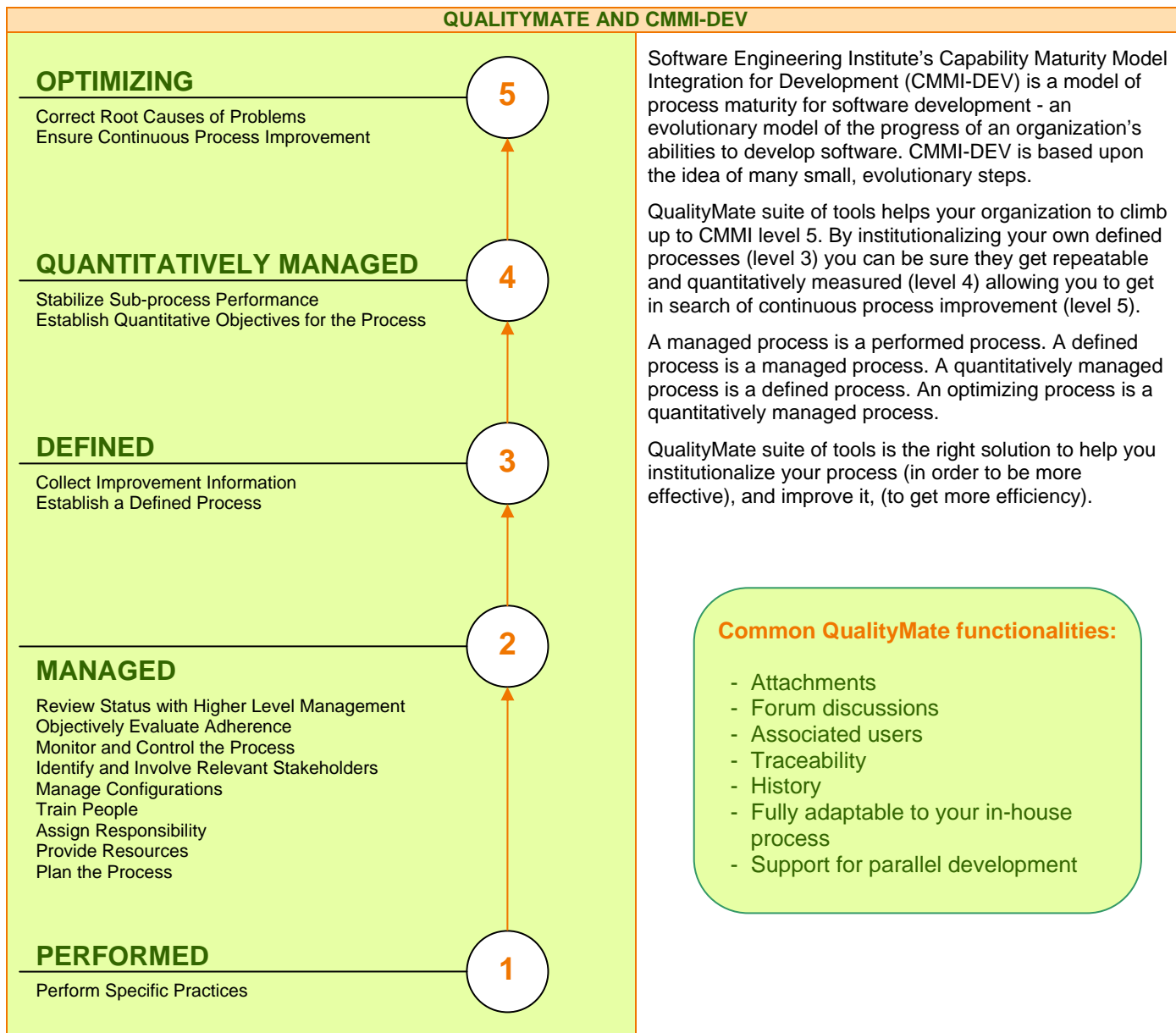
QualityMate for Tests Management



Tests Management application module. QualityMate for Tests Management is the right tool to support and facilitate your tests management process.

PROCESS IMPROVEMENT

QualityMate for Tests Management is the right tool to improve your testing process.



MINIMUM SYSTEM REQUIREMENTS

Client:	Microsoft Internet Explorer 6.0
QM Suite:	Pentium III /1.3 GHz or higher microprocessor A minimum of 512 MB of RAM 55 Mb of free disk space Windows 2000 SP4 or higher or Windows XP Professional SP2 .Net framework 1.1
QM Server:	Pentium III /1.3 GHz or higher microprocessor A minimum of 512 MB of RAM 150 Mb of free disk space Windows 2000 SP4 or higher / Windows XP

TECHNOLOGY

QM Client:	Microsoft Internet Explorer 6.0
QM Suite:	Presentation layer is developed using .Net technology
QM Server:	Business layer is developed using Java technology
QM Repository:	Data layer can be supported by MS Access or MS SQL Server databases